

# BestScan<sup>®</sup> S5 Plus

Veterinary Color Doppler Ultrasound System  
for large animal scanning

Color Doppler allows you to confirm a negative PD from as early as 18 days post AI.

The BestScan<sup>®</sup> S5 Plus series empower your efficiency through an intuitive and smart user interface that adapts to your imaging needs. The system is portable and can be used across multiple on-farm environments, including bovine and equine reproductive imaging, as well as for equine tendon scanning. We listened to you, and designed the BestScan<sup>®</sup> S5 Plus system to maximize the productivity of your practice, supporting you in providing the best veterinary ultrasound



See More | Do More | Save More

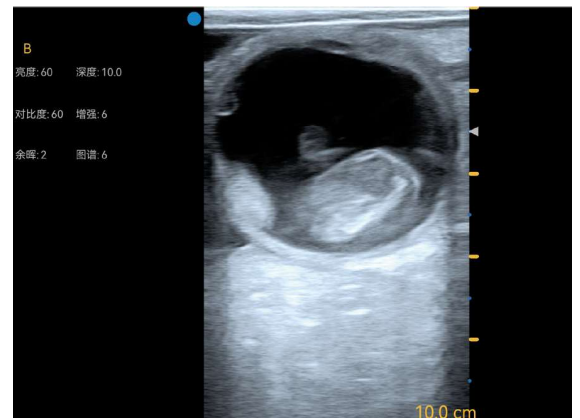


## Advanced Digital Technology

- Works on Android & Windows smart devices
- Stable wired connection, more stable without imaging delay
- Large capacity battery for 6 hours working time, can work with power bank
- 128 elements high sensitivity probe
- Rectal linear or rectal convex probe for choose
- Record videos and save images on your smart devices
- Water-proof and dust-proof design
- Software specifically for bovine and equine, ovine reproductive imaging, as well as for equine tendon scanning



**S5 Plus**  
Color Doppler Ultrasound System



## Accessories -- Professional Designs for Farm Using Environment



**BMV Animal Technology Co., Ltd**

- Add: 4/F, Yinjin Building, Block 71, Baoan Centre District, Shenzhen, China  
Marketing Center: C5, 4th Floor, International Internet Finance Entrepreneurship Center, Taohua Road, Futian Free Trade Zone, Shenzhen
- Email: [sales@bmv-vet.com](mailto:sales@bmv-vet.com)
- Web: [www.bmv-vet.com](http://www.bmv-vet.com)
- Tel: 0755-26564580



Wechat



Catalog & APP  
Download